

The background of the entire page is an aerial photograph of a wide, multi-lane highway bridge spanning a body of water. The bridge has multiple lanes in both directions, with white lane markings and arrows. Numerous cars and trucks are visible traveling across the bridge. The water on either side is a deep blue-green color.

# PRODUCT CATALOG 2023

(General)

Stock: 300590.SZ



All over the world our local teams collaborate with customers and partners to ensure our IoT products are designed with their future needs in mind. In each case, we advise them on the best smart solution to make the most of their business opportunities. Sometimes these solutions are unique and custom designed, other times, our standard mobility, transportation, network, and agriculture solutions can easily be adapted to fit their needs. With quality at the heart of our product development, our smart solutions empower our customers and partners to reimagine how their business operates.

# COMPETITIVENESS

## INTERNATIONAL

Our professionals have both local market knowledge and international experience. We've proudly helped more than 3,800 customers in over 140 countries develop and enhance their IoT solutions.

## INNOVATIVE

Through technological innovation, we make IoT a reality. Our experienced team is driven to discover new opportunities for IoT technologies. Over the past 10 years, we have launched over 200 new products with different IoT applications.

## QUALITY

Quality is at the heart of our product development. In order to guarantee our high-quality standards are achieved, we've implemented quality control procedures that are stricter than general industry requirements.

## SERVICES

Our customer relationships are built on trust. From detailed presale technical consulting to providing timely after-sales support, we are there for our customers, for when they succeed, so do we.

# 10+



YEARS IN THE IoT INDUSTRY

# 3,800+



CLIENTS EMPOWERED

# 52M+



PRODUCTS DELIVERED

# 140+



COUNTRIES HAVE FELT OUR IMPACT

# SOLUTIONS



## TRANSPORTATION

With our telematics products, we provide remote tracking, monitoring and locating of vehicles and drivers. These products help enhance the safety and efficiency of fleet management, reduce losses due to stolen assets, and provide solid foundations for risk assessment and management.

**Applications:**

*Fleet Management / Stolen Vehicle / Insurance Telematics / On-Board Diagnostics / Motorcycle / Video Telematics*



## ASSET & MOBILITY

Our mobility solutions help customers remotely monitor coveted assets. Whether they're people or objects, the solutions are similar in their abilities, that is, to offer remote asset monitoring which improves efficiencies, minimizes downtime, reduces maintenance costs, protects against financial risk; and ultimately, improves service abilities.

**Applications:**

*Personal Security / Asset Tracking / Asset Security (Ultra-long Standby Time) / Scooter*



## NETWORKS

With advanced security capabilities, our network products are ideal tools to build and extend accessible, reliable and safe connections. These products are equipped with diverse interfaces and functionality, to fully meet the demands required in different market sectors.

**Applications:**

*On-Board Diagnostics / Router*



## CUSTOMIZATION

For customers with entirely unique requests, we play the role of a strategic advisor to develop original IoT project proposals for them. With an analytical mindset, our customized solutions are designed to achieve a balance between business and technological priorities.

**Applications:**

*Cold Chain / Insurance Telematics/ Scooter & Bike*



# TRANSPORTATION

- **14 million+ telematics products delivered worldwide**
- **60+ unique products available**
- **Solutions for all forms of transportation**

## FEATURED PRODUCTS

### GV300 Series

Advanced Vehicle Tracker



#### Applications:

*Fleet Management /  
Cold Chain /  
Transportation Monitoring*

- Best-seller: a large number of successful GV300 deployments worldwide
- Multiple interfaces, including a RS232 serial port, as well as digital and analog I/O
- Supports various accessories, such as CAN adapter as well as temperature and humidity sensors
- LTE Cat 1 | LTE Cat 4 | UMTS/ WCDMA/HSPA | EGPRS /GSM

### GV600 Series

LTE Rechargeable Ruggedized Trailer Tracker



#### Applications:

*Trailer Tracking /  
Flatbed Truck Tracking /  
Tanker Tracking*

- Ruggedized and waterproof case that is IP67 compliant and designed for use in harsh environments
- Internal large battery pack with 120-day standby time, supports dual external power sources
- Supports BLE temperature and humidity sensor, BLE key fob and BLE padlock
- LTE Cat M1/NB1 | UMTS/HSPA | EGPRS

### GV57 SERIES

Compact Waterproof Vehicle Tracker



#### Applications:

*Stolen Vehicle Recovery /  
Automobile Finance /  
Motorcycle Monitoring*

- Waterproof, IP67
- Simple five-wire installation using in-line connector
- Digital I/O for ignition detection, panic button etc.
- Supports wide voltage
- Supports BLE\* (Optional version)
- LTE Cat M1/NB2 | EGPRS

### GV350 SERIES

LTE Advanced Vehicle Tracker



#### Applications:

*Fleet Management /  
Cold Chain /  
Transportation Monitoring*

- Built-in CANBus and J1708 Bus for reading advanced vehicle data
- Multiple I/Os support diverse accessories such as temperature and fuel monitoring sensors
- Supports BLE
- LTE Cat 1 | LTE Cat M1/NB1 | EGPRS



## FEATURED PRODUCTS

### GV50 Series

LTE Compact Vehicle Tracker



- Compact size for convert installation
- Ideal for a wide range of vehicle tracking applications
- Easy installation using an in-line connector
- LTE Cat 1/M1/NB2 | EGPRS/GSM

#### Applications:

Car Leasing /  
Stolen Vehicle Recovery /  
Automobile Finance

### GB100 SERIES

LTE Battery-Mounted Vehicle Tracker with Built-in BLE



- GB100 series products are successfully deployed in large insurance telematics projects worldwide
- Safe installation in under five minutes
- Waterproof, compliant to IP67
- Internal 6-axis accelerometer that supports driver behavior monitoring and crash detection
- Supports BLE
- E-Toll ready
- LTE Cat M1/NB2 | EGPRS/GSM

#### Applications:

Insurance Telematics /  
Automobile Finance /  
Stolen Vehicle

### GV500 SERIES

Plug-in Vehicle Tracker with OBDII Support



- Plug and play, reliably reads ISO CAN Bus data
- Supports BLE
- Optimal GNSS performance enabled by two orthogonal GNSS antennas
- Supports Wi-Fi sharing
- LTE Cat M1/NB1 | EGPRS

#### Applications:

Car Leasing / Insurance Telematics /  
Lot Management



## TRANSPORTATION

- **14 million+ telematics products delivered worldwide**
- **60+ unique products available**
- **Solutions for all forms of transportation**





# TRANSPORTATION

- 14 million+ telematics products delivered worldwide
- 60+ unique products available
- Solutions for all forms of transportation

## FEATURED PRODUCTS

### CV100LG

LTE Cat 4 Dual Dash Camera with WiFi Sharing



- Reliable video coverage via front and driver facing camera views
- On-demand and automatic accident footage upload
- Wi-Fi Internet access
- Full telematics features and support for Queclink protocols
- LTE Cat 4 | HSPA | GSM/GPRS

#### Applications:

Insurance Telematics /  
Fleet Management /  
Car Leasing

### CV200XEU/XNA (COMING SOON)

Intelligent 4G Dash Camera with Full Featured Telematics



- High-definition Front Camera
- Optional AI feature (DMS / ADAS)
- Wi-Fi AP Mode & Station Mode
- Supports BLE
- Full telematics features
- Second Camera optional:  
Interior camera for cabin view or  
DMS camera for driver safety
- LTE Cat 6 | 3G

#### Applications:

Automobile Insurance /  
Car Leasing /  
Ride Sharing & Ride Hailing /  
Driver Coaching





## FEATURED PRODUCTS

### GL300 SERIES

LTE Advanced Real-Time Asset Tracker



**Applications:**  
Asset Tracking /  
Lone Worker Safety /  
Stolen Vehicle

- GL300 series products are successfully deployed in North America and globally
- Internal battery with 300 hours standby time (when reporting once every 10 minutes)
- Supports accessories such as external battery kit (17600 mAh) and IP67 waterproof magnetic case
- Ideal for personal security as well as asset and vehicle monitoring
- LTE Cat M1/NB2 | UMTS | EGPRS

### GL500 SERIES

LTE Waterproof Standby Asset Tracker



**Applications:**  
Asset Security / Cold Chain /  
Lot Management

- Up to 7-year standby time
- Waterproof, compliant to IP67
- Rapid and flexible installation
- Ideal for asset monitoring and lot management
- LTE Cat M1/NB2 | EGPRS

### GL53MG

LTE Micro Waterproof Standby Asset Tracker



**Applications:**  
Asset Security /  
Stolen Vehicle /  
Automobile Finance

- Up to 3 years of standby time
- Micro size allowing covert installation
- Waterproof, IP67 compliant
- Combined with one of Queclink vehicle tracker to offer additional protection by built-in BLE
- Ideal for stolen vehicle recovery and asset monitoring
- LTE Cat M1/NB2 | EGPRS

### GL502MG

LTE Waterproof Tracker with 10-year Standby Time



**Applications:**  
Asset Security /  
Cold Chain /  
Lot Management

- Up to 10-year standby time
- Supports wireless charging
- Waterproof, compliant to IP68
- Support BLE
- Supports Wi-Fi positioning
- LTE Cat M1/NB2 | EGPRS



## ASSET & MOBILITY

- 6 million+ products shipped worldwide
- Small devices with state-of-the-art battery longevity
- Provide remote security monitoring for lone workers, cargo, equipment, scooters, bikes and so forth





# ASSET & MOBILITY

- 6 million+ products shipped worldwide
- Small devices with state-of-the-art battery longevity
- Provide remote security monitoring for lone workers, cargo, equipment, scooters, bikes and so forth

## FEATURED PRODUCTS

### GT301

Safety Phone for Vulnerable Groups



- OLED inbound SMS display supporting 6 different languages
- 4 speed dial keys & 20 stored phone numbers
- Superior hands-free calling
- Emergency button for SOS alarm
- Emergency fall alert
- GSM/GPRS

#### Applications:

Lone Worker Safety /  
Anti-domestic Violence /  
Senior Care

### GL52LP

LoRa Micro Standby GNSS Asset Tracker



- Over 4-year standby time
- Micro size allowing covert installation
- Resistant to existing jamming techniques
- IP67 waterproof case (optional)
- Ideal for asset monitoring and stolen vehicle recovery
- LoRa

#### Applications:

Asset Security /  
Stolen Vehicle Recovery /  
Automobile Finance

### GL52S

Sigfox Micro Standby GNSS Asset Tracker



- Up to 4-year standby time
- Micro size allowing covert installation
- Resistant to existing jamming techniques
- IP67 waterproof case (optional)
- Sigfox tracking device supporting GNSS positioning

#### Applications:

Asset Security /  
Stolen Vehicle Recovery /  
Automobile Finance

### GL52SP

Sigfox Mini Standby GNSS Asset Tracker



- Up to 4-year standby time
- Mini size ultra-thin design allowing covert installation
- Resistant to existing jamming techniques
- Ideal for asset monitoring and stolen vehicle recovery
- Sigfox tracking device supporting GNSS positioning

#### Applications:

Asset Security /  
Stolen Vehicle Recovery /  
Automobile Finance



## FEATURED PRODUCTS

### WR100 SERIES

Compact LTE Dual-SIM Industrial Wi-Fi Router



#### Applications:

Industrial automation /  
Smart City /  
Transportation and Retail

- LTE CAT 4 with speeds up to 150Mbps
- Reliable Connectivity with Dual SIM
- VPN Secure Connection
- Ethernet Interfaces (1 WAN/LAN, 1 LAN)
- One configurable RS232/RS485 Serial Port
- Provides secure data channel to IoT solutions and acts as a Wi-Fi/hotspot in outdoor situations
- Telematics features, including GNSS positioning
- LTE Cat 4 | WCDMA | EGPRS

### WR201 SERIES

LTE Cat 4 Dual-SIM Industrial Wi-Fi Router



#### Applications:

Industrial automation /  
Smart City /  
Transportation and Retail

- LTE CAT 4 with speeds up to 150 Mbps
- Reliable Connectivity with Dual SIM
- VPN Secure Connection
- 2 Ethernet Interfaces (1 WAN, 3 LAN)
- Multiple I/Os, including RS232, RS485 and digital I/O for various use scenarios
- Provides secure data channel to IoT solutions and acts as a Wi-Fi/hotspot in outdoor situations
- Telematics features, including GNSS positioning
- LTE Cat 4 | WCDMA | EGPRS

### WR300FG

5G Industrial Cellular Router



#### Applications:

Intelligent Industry /  
Edge Computing /  
IoV (Internet of Vehicle) /  
Smart City/Smart Energy /  
Smart Healthcare

- Support 5G SA and NSA network
- 5 Ethernet port (1 x WAN + 4 x LAN)
- Rich interfaces: 1 x 232, 1 x 485
- 2 x SIM, auto switch over
- Support Wi-Fi 6.0 802.11b/g/n/ac/ax
- Support OpenVPN, Ipsec, GRE, PPTP, L2TP, Stunnel for security data transmission
- Support Modbus, MQTT, HTTP and other IOT protocols



## NETWORKS

- Advanced router products
- Highly secure, withstand Queclink's rigorous quality control processes
- New launch industrial routers in 2023



# SOFTWARE

- Reduce time, effort and cost for device validation, management and integration
- Boost project management efficiency
- Easier integration and testing with reliable tools
- Add value to Queclink hardware usage

```
mirror_mod = modifier
# set mirror object to m
mirror_mod.mirror_obj
if _operation == "MIRROR"
    mirror_mod.use_x = Tr
    mirror_mod.use_y = Fa
    mirror_mod.use_z = Fa
elif _operation == "MIRRE
    mirror_mod.use_x = Fa
    mirror_mod.use_y = Fa
    mirror_mod.use_z = Fa
    mirror_mod.use_w = Fa
```

## FEATURED PRODUCTS



### QMS

A secure, remote update and management system for your Queclink devices



- Task and device status in dashboard
- Full access control and audit trail
- Managed firmware upgrade with reporting
- Mass device configuration update
- Customer hosted solution



### QPAK

A service tool designed for simplifying the integration of your Queclink devices



- Protocol validation
- Protocol data parsing into standard name value pairs





# CUSTOMIZATION

- Designed over 200 customized products
- Collaborative development focused on delivering valuable IoT products to market
- Rapid creation of new products based on standard platforms and frameworks

# 1

## COLLABORATION

Develop original IoT project proposals unique to each customer's specific needs.

# 2

## DESIGN

With our platform, we have a wealth of resources to utilize when we begin a new custom project.

# 3

## MANUFACTURE

Our manufacturing resources turn design ideas into full-service quality assured solutions that support unique customer configurations.

# 4

## SUPPORT

We quickly respond to our customer's feedback and provide timely after-sales support and improvements.

# OUR ACCESSORIES

## CAN ADAPTER

### CAN100

CAN100 supports multiple vehicle models and automatically matches with the selected vehicle.



## FUEL SENSOR

### UFS300

The UFS300 is a non-invasive tool that does not require contact with the fuel and does not do any damage to the fuel tank.



## 1-WIRE KIT

### 1-WIRE KIT

- AC100: RS232 to 1-wire conversion
- 1-wire temperature sensor
- iButton Kit



## RFID READER

### DR200

- Supports various MIFARE transponders
- Built-in buzzer



## EXTERNAL BATTERY KIT

### EBK

- Works with GL300 series to ensure real-time monitoring in long-distance transportation.
- Rechargeable battery capacity of 17600 mAh
- Includes control unit for power saving and motion detection
- IP67 waterproof



## MAGNETIC WATERPROOF CASE

### GL-HM3G-V3

WKF300 is a BLE beacon designed as a key fob. It can be used for driver ID identification and as a panic button.



## CONTACTLESS READER

### ACL120

Allow contactless data reading from CANBus devices without having to cut or solder any cables.



## WIRELESS CHARGER KIT

### GL521MG WIRELESS CHARGER KIT

The wireless charging kit enables wireless charging of compatible products such as GL521MG





# OUR ACCESSORIES



Transportation  
Accessories

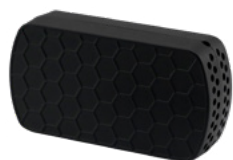


Asset & Mobility  
Accessories

## BLE TEMPERATURE & HUMIDITY SENSOR

### WTH301

The WTH301 is used to measure temperature and humidity levels in logistics and transportation.



## BLE DOOR SENSOR

### WMS301

- Detect door open and close status
- Measure temperature and humidity levels



## BLE TPMS SENSOR

### ATP102

- Internal TPMS sensor
- Tire pressure and tire temperature monitoring
- Long standby time (5 years)
- The sensor is sold by set /4 pcs



## BLE TPMS SENSOR

### ATP100

- External TPMS sensor
- Tire pressure and tire temperature monitoring
- Long standby time (5 years)
- The sensor is sold by set /4 pcs



## BLE KEY FOB

### WKF300

WKF300 is a BLE beacon designed as a key fob. It can be used for driver ID identification and as a panic button.



## BLE BEACON

### WID310

- Easy and Low Cost Installation
- IP67 Waterproof
- Compact Size
- Replaceable Coin Battery
- Power On/Off Switch



## BLE RELAY

### WRL300

- Compact Size
- IP64
- Easy Installation
- Remote Control
- BLE 5.1



PRODUCT COMPARISON

NC=Nonrechargeable  
O=Optional  
\* Supported by additional accessory

		GV300W	GV310LAU	GV305CEU	GV600WG	GV620MG	GV57	GV57MG	GV57CG	GV57CEU	GV350MG	GV350CEU	GV50P	GV55	GV56	GV55W	GV53MG	GV58CEU	GV58LAU	GV500MA	GV501LG
Technology	Item																				
	Cellular Connectivity	3G	4G	4G	3G	4G	2G	4G	4G	4G	4G	4G	2G	2G	2G	3G	4G	4G	4G	4G	4G
	BLE		√	√	√	√		√				√			√			√	√		√
Hardware	Wifi																				
	Operating Voltage	8-32V	8-32V	8-32V	8-32V	8-32V	8-32V	8-32V	8-90V	8-90V	8-32V	8-32V	8-32V	8-32V	8-32V	8-32V	8-32V	8-32V	8-32V	8-32V	8-16V
	IP Rating				IP67	IP67	IP67	IP67	IP67	IP67											
Function	Battery (mAh)	250	250	250	5800	5800	190	190	190	190	250	250	190	250	170	250	190	190	190	60	
	Optional eSIM	√	√	√	√	√	√	√	√	√	√	√	√	√	√	√	√	√	√	√	√
	Overvoltage Protection	√	√	√	√	√	√	√	√	√	√	√	√	√	√	√	√	√	√	√	√
Function	Zero Power Consumption							√													
	1-Wire Interface			1	1	1					1	1			1			1			
	RS232 Serial Port	1	1	1	1	1					2	1									
Function	RS485 Serial Port			1																	
	Analog Input	1	1	3	1	1			1	1		3			1			1			
	Negative Digital Input	2	1	4			1	1	1	1	3	3		1		1		1	1		
Function	Ignition Detection	1	1	1	1	1	1	1	1	1	1	1	1	1	1	1	1	1	1		
	Digital Output	3	1	6			1	1	1	1	2	5	1	2	1	2	1	1	1		
	Configurable Digital Input/Output	1	1		4	4					1						1	1			
Function	Configurable Analog Input/Digital Input																				
	Configurable Analog Input/Digital Output																			√	√
	OBDII Interface																				
Function	CAN Interface	√*									√*										
	CAN Adapter Support	√	√																		
	K Line	√	√	√	√	√	√	√	√	√	√	√	√	√	√	√	√	√	√	√	√
Function	Audio Interface	√	√	√	√	√		√	√	√	√	√	√	√	√	√	√	√	√	√	√
	Internal Cellular Antenna	1									√										
	Internal GNSS Antenna	√	√	√	√	√	√	√	√	√	√		√	√	√	√	√	√	√	√	√
Function	Optional External GNSS Antenna											√									
	Accelerometer																				
	Gyroscope Sensor																				
Function	Built-in Light Sensor																				
	Built-in Temperature Sensor	√	√	√	√	√	√	√	√	√	√	√	√	√	√	√	√	√	√	√	√
	Built-in Humidity Sensor	√	√	√	√	√	√	√	√	√	√	√	√	√	√	√	√	√	√	√	√
Function	Scheduled Location Report	√	√	√	√	√	√	√	√	√	√	√	√	√	√	√	√	√	√	√	√
	Geo-fences	√	√	√	√	√	√	√	√	√	√	√	√	√	√	√	√	√	√	√	√
	Tow Alarm	√	√	√	√	√	√	√	√	√	√	√	√	√	√	√	√	√	√	√	√
Function	Speed Alarm	√	√	√	√	√	√	√	√	√	√	√	√	√	√	√	√	√	√	√	√
	Idling Alarm	√	√	√	√	√	√	√	√	√	√	√	√	√	√	√	√	√	√	√	√
	Low Battery Alarm	√	√	√	√	√	√	√	√	√	√	√	√	√	√	√	√	√	√	√	√
Function	SOS Alarm		√	√		√	√	√	√	√	√	√	√	√	√	√	√	√	√	√	√
	Removal Alarm	√	√	√			√	√	√	√	√	√	√	√	√	√	√	√	√	√	√
	Crash Detection	√	√	√	√	√	√	√	√	√	√	√	√	√	√	√	√	√	√	√	√
Function	Driving Behavior Monitoring	√	√	√	√	√	√	√	√	√	√	√	√	√	√	√	√	√	√	√	√
	Motion Detection	√	√	√	√	√	√	√	√	√	√	√	√	√	√	√	√	√	√	√	√
	External Power Monitoring	√	√	√	√	√	√	√	√	√	√	√	√	√	√	√	√	√	√	√	√
Function	Virtual Ignition Detection	√	√	√	√	√	√	√	√	√	√	√	√	√	√	√	√	√	√	√	√
	Configuration OTA	√									√										
	Firmware OTA	√			√	√					√		√	√	√	√	√			√	
Function	Garmin FMI	√	√	√	√	√	√	√	√	√	√	√	√	√	√	√	√	√	√		
	Virtual Odometer	√*	√	√		√*				√	√*	√			√*			√	√		√
	Engine Control																				
Function	Fuel Monitoring										√				√		√			√	
	Fall Detection	√*	√	√	√*	√*				√	√*	√			√*			√	√		
	Accelerometer Self-Calibration	√	√	√	√	√	√	√		√	√	√	√	√	√	√	√				
Function	Driver Identification	√*	√*	√*	√*			√*	√*			√*	√*	√*		√*					



PRODUCT COMPARISON

NC-Nonrechargeable  
O-Optional  
\* Supported by additional accessory

Item		GB100P	GB130MG	GMT200	GL300W	GL505	GL520MG	GL530MG	GL521MG	GL53MG	GL502MG	GT301	GL52LP	GL52S	GL52SP
Technology	Cellular Connectivity	2G	4G	2G	3G	2G	4G	4G	4G	4G	4G	2G	LoRa	Sigfox	Sigfox
	BLE	√	√						√	√	√			√	√
	RF 433.92MHz														
Hardware	Operating Voltage	8-32V	8-32V	9-32V											
	IP Rating	IP65	IP67	IPX6	IPX5	IPX7	IP67	IP67	IP67	IP67	IP68		O IP67	O IP67	
	Battery (mAh)	200	200	650	2600	NC 1500	1400	1400	2400	NC 2400	57000	1000	NC 2400	NC 1900	NC 2400
	Optional eSIM	√	√	√	√	√			√	√	√	√			
	Overvoltage Protection	√	√	√											
	Zero Power Consumption			√											
	1-Wire Interface														
	RS232 Serial Port														
	RS485 Serial Port														
	Analog Input														
	Negative Digital Input			1											
	Ignition Detection			1											
	Digital Output			1											
	Configurable Digital Input/Output														
	Configurable Analog Input/Digital Input														
	Configurable Analog Input/Digital Output														
	OBDII Interface														
	CAN Interface														
	CAN Adapter Support											√			
	K Line	√	√	√	√	√	√	√	√	√	√	√			
	Audio Interface	√	√	√	√	√	√	√	√	√	√	√	√	√	√
	Internal Cellular Antenna														
	Internal GNSS Antenna	√	√	√	√	√	√	√		√	√	√	√	√	√
	Optional External GNSS Antenna	√	√												
	Accelerometer						√	√	√						
	Gyroscope Sensor						√	√	√		1				
	Built-in Light Sensor														
	Built-in Temperature Sensor	√	√	√	√	√	√	√	√	√	√	√	√	√	√
	Built-in Humidity Sensor	√	√	√	√	√	√	√	√	√	√	√	√	√	√
Function	Scheduled Location Report	√	√	√											
	Geo-fences	√	√	√	√	√	√	√	√	√					
	Tow Alarm	√	√	√											
	Speed Alarm	√	√	√	√	√	√	√	√	√	√	√	√		√
	Idling Alarm			√	√		√	√	√	√		√			
	Low Battery Alarm	√	√	√			√	√	√						
	SOS Alarm	√	√	√											
	Removal Alarm	√	√	√	√										
	Crash Detection	√	√	√	√	√	√	√	√	√	√	√	√	√	√
	Driving Behavior Monitoring	√	√	√	√										
	Motion Detection	√	√												
	External Power Monitoring	√	√	√	√	√	√	√	√	√	√	√	√	√	√
	Virtual Ignition Detection	√	√	√	√	√	√	√	√	√	√	√			
	Configuration OTA														
	Firmware OTA	√	√	√	√										
	Garmin FMI			√											
	Virtual Odometer														
	Engine Control			√	√							√			
	Fuel Monitoring	√	√	√											
	Fall Detection														
	Accelerometer Self-Calibration	√	√	√	√	√	√	√		√	√	√	√	√	√
	Driver Identification	√*	√*	√*	√*			√*	√*			√*	√*	√*	



Stock: 300590.SZ

+86 21 5108 2965

sales@queclink.com

No.30, Lane 500, Xinlong Road, Minhang District, Shanghai, China, 201101



Scan to contact us



Scan to follow our  
LinkedIn



Scan to learn more on our  
website